



CIDE-B Polyclonal Antibody

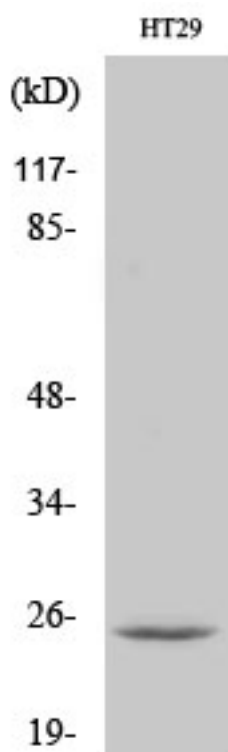
Catalog No	YP-Ab-00355
Isotype	IgG
Reactivity	Human;Mouse
Applications	WB;IHC;IF;ELISA
Gene Name	CIDEB
Protein Name	Cell death activator CIDE-B
Immunogen	The antiserum was produced against synthesized peptide derived from human CIDEB. AA range:91-140
Specificity	CIDE-B Polyclonal Antibody detects endogenous levels of CIDE-B protein.
Formulation	Liquid in PBS containing 50% glycerol, 0.5% BSA and 0.02% sodium azide.
Source	Polyclonal, Rabbit,IgG
Purification	The antibody was affinity-purified from rabbit antiserum by affinity-chromatography using epitope-specific immunogen.
Dilution	Western Blot: 1/500 - 1/2000. Immunohistochemistry: 1/100 - 1/300. Immunofluorescence: 1/200 - 1/1000. ELISA: 1/40000. Not yet tested in other applications.
Concentration	1 mg/ml
Purity	≥90%
Storage Stability	-20°C/1 year
Synonyms	CIDEB; Cell death activator CIDE-B; Cell death-inducing DFFA-like effector B
Observed Band	24kD
Cell Pathway	intracellular,lipid particle,cytosol,perinuclear region of cytoplasm,
Tissue Specificity	Highly expressed in liver and small intestine and, at lower levels, in colon, kidney and spleen.
Function	function:Activates apoptosis.,similarity:Contains 1 CIDE-N domain.,subunit:Inhibited by DFFB. Interacts with DFFA and DFFB.,tissue specificity:Highly expressed in liver and small intestine and, at lower levels, in colon, kidney and spleen.,
Background	function:Activates apoptosis.,similarity:Contains 1 CIDE-N domain.,subunit:Inhibited by DFFB. Interacts with DFFA and DFFB.,tissue specificity:Highly expressed in liver and small intestine and, at lower levels, in colon, kidney and spleen.,
matters needing attention	Avoid repeated freezing and thawing!



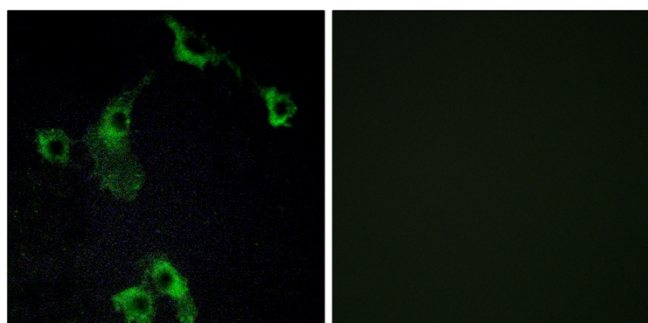
Usage suggestions

This product can be used in immunological reaction related experiments. For more information, please consult technical personnel.

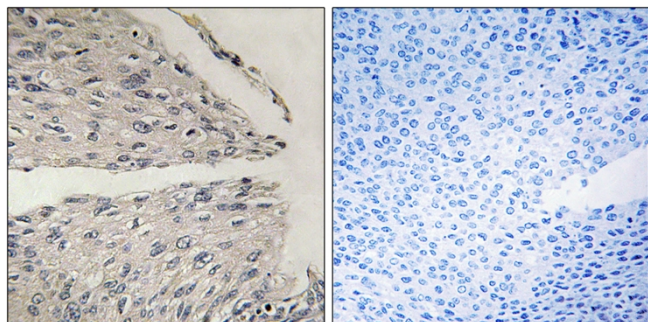
Products Images



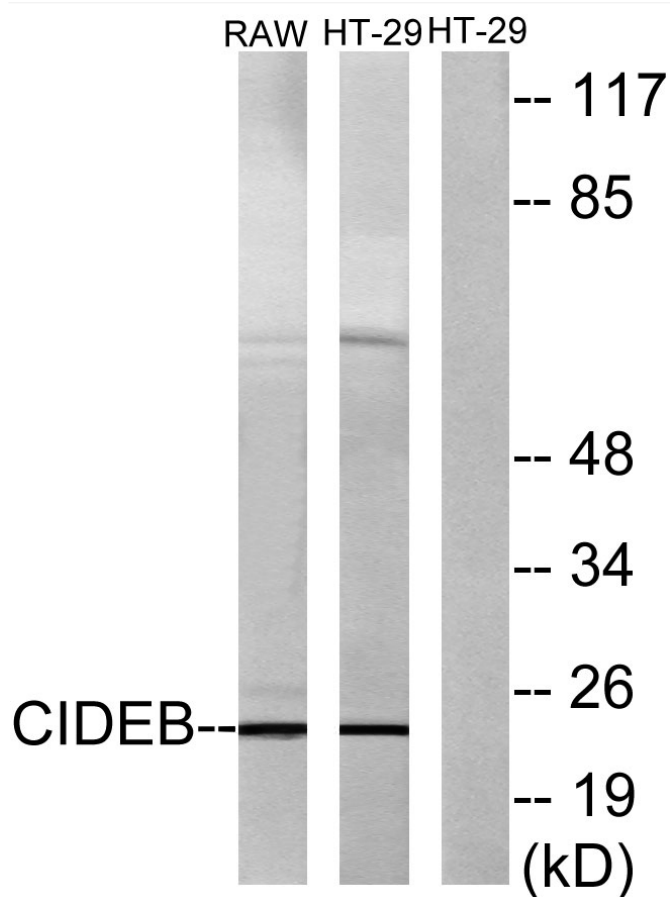
Western Blot analysis of various cells using CIDE-B Polyclonal Antibody



Immunofluorescence analysis of COS7 cells, using CIDE-B Antibody. The picture on the right is blocked with the synthesized peptide.



Immunohistochemistry analysis of paraffin-embedded human cervix caecinoma tissue, using CIDE-B Antibody. The picture on the right is blocked with the synthesized peptide.



Western blot analysis of lysates from HT-29 and RAW264.7 cells, using CIDEB Antibody. The lane on the right is blocked with the synthesized peptide.